


SPECIAL
COLLECTOR'S
EDITION

2008 **LUXURY** HOME TOUR
MIDWEST

Winter 2008

Home

CHICAGO

**TURN ON
LIGHTING**
IN NEW
NEUTRALS

 **RUSTLE UP**
YOUR
COWBOY
COOL

22

DREAM HOMES
get inspired!

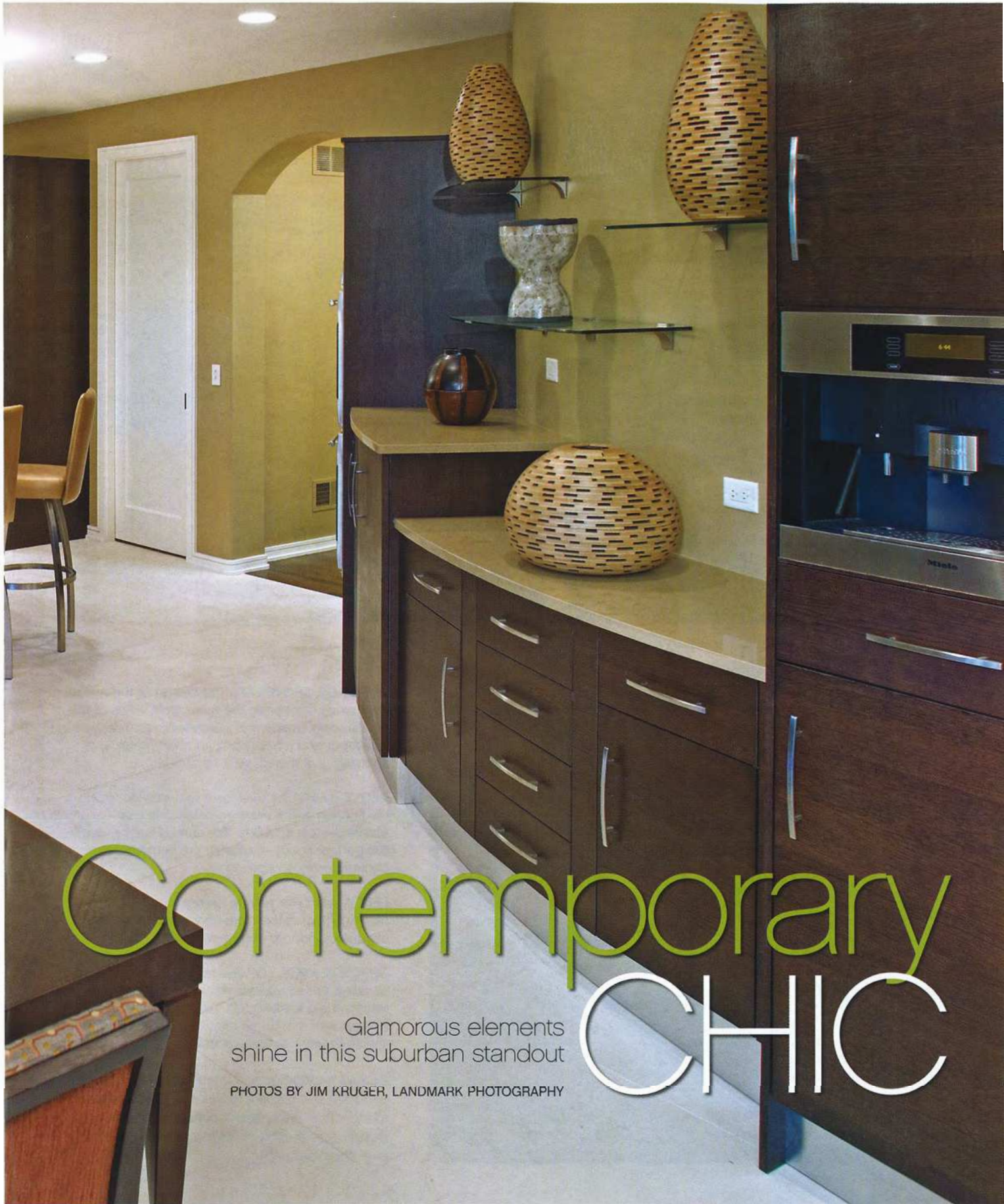
Winter 2008 / \$3.99

0 86771 56373 9 06

Built for a young family making the move from downtown Chicago, this two-story stone-and-stucco home is a beautiful combination of styles. "The home is soft contemporary with a touch of Prairie detailing," says Jason DeBaker, associate principal architect of Orren Pickell Designers & Builders. Nestled next to a brook, the 5,400-square-foot home sits on 2 acres of the heavily wooded Tarns of the Moor subdivision in Bannockburn. The four-bedroom home reflects the homeowners' need for family-friendly space, such as a sport court in the garage that features an adjustable basketball rim and rubber-mesh floor customized with the owner's university alumni logo. There are quiet respites here, too, such as a sunken deck with a Jacuzzi that sits off the owners' suite. The whole package comes with a home automation system that controls audio, video, lighting, and security. —C.J.

The homeowners of this 5,400-square-foot home in Bannockburn wanted their space to be clean and contemporary. Orren Pickell Designers & Builders used soft curves and arches to offset the crispness of the home's gourmet-style kitchen.

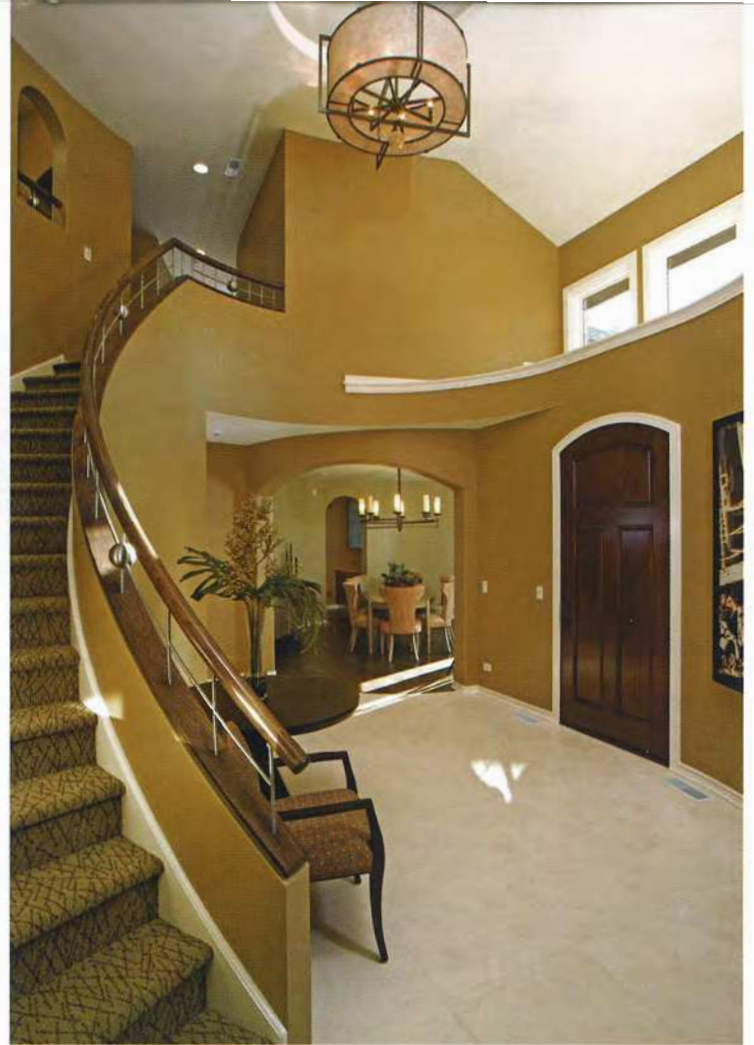




Contemporary CHIC

Glamorous elements
shine in this suburban standout

PHOTOS BY JIM KRUGER, LANDMARK PHOTOGRAPHY



THIS PAGE, ABOVE LEFT The design of the main-floor study maximizes the panoramic views of the surrounding woods and water features. Textured wallpaper and a heavy built-in cherry desk and shelving give the space a regal feel.

ABOVE RIGHT The oval foyer features limestone tile flooring and a sweeping staircase with stainless-steel spindles. The curved walls provide the perfect space to display the homeowners' contemporary art collection.

LEFT A soft color palette carries throughout the home, including the main-floor great room, with expansive, floor-to-ceiling windows.

OPPOSITE PAGE, TOP The spa-style owners' bath boasts a raised teakwood walkway behind the freestanding soaking tub. The open two-person shower with rain dome mimics the waterfall, visible through square windows.

BELOW Nestled near a brook and a community waterfall, the home's exterior features splayed stone, clean lines, and touches of Prairie detailing, including an arched copper canopy over the front entry.



BUILDER
ORREN PICKELL DESIGNERS &
BUILDERS

HOME LOCATION
Bannockburn

SUPPLIERS
Bank of America
Edward Hines Lumber
Portraits by Darton
The Westye Group

FOR MORE INFORMATION ON FEATURED
PRODUCTS AND SUPPLIERS, SEE PAGE 117.