

*ECODESIGN MADE EASY

HOME

Chicago

September/October 2008

+ GARDEN

The New Green

English Splendor on
the North Shore
Style on Wheels:
A Modern Motor Home
Give Your Walls
Instant Character
Fall Harvest Party

U.S. \$4.99



chicagohomemag.com

SPECIAL ADVERTISING FEATURE

In the Grand Manor



BY BARBARA REVSINE
PHOTOGRAPHY BY LINDA OYAMA BRYAN

CHICAGO MAGAZINE &
CHICAGO HOME + GARDEN MAGAZINE 2008 SHOWHOUSE

THE
Scottish Manor

Located in pastoral Bannockburn, IL, the hidden jewel of the North Shore, The Scottish Manor, built by Orren Pickell Designers & Builders, is rich in design and offers more than 9,000 square feet among its two master bedrooms, expansive kitchen, cherry-wood library, and more.

Rarely does a luxury custom home builder have an opportunity to create a unique, estate oriented community from the ground up. For Orren Pickell, Tarns of the Moor, a 33-acre enclave in north suburban Bannockburn, represents this kind of opportunity. Ten homes on multi-acre sites are planned, all custom designed and built by Orren Pickell Designers & Builders and exclusively listed by Baird & Warner.

Tarns of the Moor, a name inspired by the natural beauty of the setting, occupies one of the larger parcels of wooded land recently made available in the Chicago area. The small lake already on the property has been joined by a series of picturesque ponds reminiscent of the tiny mountain lakes, or tarns found in the craggy reaches

of the Highlands. And while moors are sometimes lonely and brooding, references to them conjure romantic images of the pristine Scottish countryside, an altogether fitting allusion in a village named for a Scottish town and an environment created by a builder whose mother was born in Glasgow.

The Scottish Manor offers an intimacy rarely found in homes of this size, along with a floor plan flexible enough to accommodate the cyclical changes that occur in the normal course of family life. Like Tarns of the Moor itself, the home pays tribute to the shared heritage of the builder and village. At the same time, the expansive 9,000-square foot residence is strictly cutting-edge in terms of materials and technology.



■ Preceding page: Complete with a circular staircase, custom wainscoting, arched doorways, a Travertine stone floor by Materials Marketing, and elegant millwork from CabinetWerks, the spacious foyer introduces many of the home's signature design themes. This page: To emphasize the room's unusual shape, the wood floor in the oval dining room is bordered with the same stone used in the foyer. Hurd windows provided by Estate Windows, Ltd. frame a beautiful view of the wooded property and the contrived English basement created by James Martin Associates, Inc.





“We wanted to design a space equipped with all the amenities and capabilities of a state-of-the-art kitchen, without compromising the old-world aesthetic of the room,” says Orren Pickell.

Built with a mix of natural stone and stucco, materials similar to those used for centuries in the Scottish Highlands, the house has arch-top and mullioned windows, sweeping roof lines, zinc gutters and flashing, and a three-car garage. French doors in the family room provide access to a southeast-facing screened porch with an unobstructed and very private view of the property.

Of the home's six bedrooms, two are master suites, one on the first floor and one on the second. Both have expansive walk-in closets, wood burning fireplaces, and luxurious bathrooms with spa-style tubs

and oversized showers. There are three powder rooms, two on the first floor and one on the lower level near the leisure room and exercise area. Two of the four family bedrooms on the second floor have private baths and two share a connecting bath. Laundry facilities are located on both the first and second floors.

Consistent with the very human scale of the house, Pickell's design team opted for a single front door and a foyer ceiling similar in height to the ceilings in the rest of the house, thus bypassing the massive entryways that have become something of an architectural cliché in the last decade.

In another departure from the contemporary norm, the circular, custom designed staircase, complete with pewter spindles, is located on the right side of the foyer, rather than in the center. As a result, everyone who enters the house through the front door looks across the oval dining room to the large windows framing a breathtaking view of the wooded setting.

The foyer provides access to both the gallery leading to the casual, family-oriented spaces and the arched passageway, to the more formal and private areas. Many of the home's signature design features are introduced here, beginning with the



Antiqued Ocean Blue Travertine stone floor supplied by Materials Marketing, three panel, custom wainscoting, the arched doorways, and paneled barrel-vault ceilings in the adjacent hallways. Small benches set at right angles to the leaded glass window near the front door replicate the cozy charm of an inglenook fireplace. The warmth is heightened by the built-in bookcases used here and elsewhere in the house.

In designing the house, Pickell's architectural team was guided, in part, by a concept positioning the kitchen as a small cottage that grew by bits and pieces into a gracious manor house. Family life still revolves around the kitchen, and opening it to the family and breakfast room, as is found in *The Scottish Manor*, enhances its importance as a gathering spot.

Tumbled stone similar to the native stone traditionally used to build Scottish homes delineates the more casual areas of the house. The walls of the passageway from the kitchen to the family room are stone, as are the walls in the adjacent stairway leading to the master bedroom on the second floor and the leisure room on the lower level. In the family room itself, the fireplace, one of seven in the house, is done in the same stone, as is the fireplace on the lower level. Because the hearth, in both cases, is sufficiently recessed, there's no need for a screen, a detail that

enhances their castle-like appearance.

No room in the house requires more detailed planning than the kitchen. Beauty and utility have to strike a balance, especially in a house where vintage charm plays as significant a role as it does in this one. By skillfully hiding or camouflaging the technology, Pickell's designers were able to maintain the illusion of age. "We wanted to design a space equipped with all the amenities and capabilities of a state-of-the-art kitchen, without compromising the old-world aesthetic of the room," says Orren Pickell.

■ Opposite: The professional-quality Wolf range from The Westye Group-Midwest is flanked by granite counter tops, custom cabinets from Wood-Mode, and a slate backsplash from Materials Marketing.

■ Above: Designed to be the center of family life, the kitchen has a tumbled stone doorway, re-claimed barn beams, and a stucco ceiling created by American Classic Co.



Cabinetry is crucial in a kitchen, both in terms of function and appearance. Finished in a dark stain, the custom built cherry-wood cabinets with dovetail construction and soft-close doors and drawers were built by Wood-Mode. Like the exquisite millwork throughout the house designed by Pickell's CabinetWerks team, they provide a backdrop compatible with the kitchen's country-manor persona.

Finished in the deeper wood tones favored for centuries in Scotland, the cabinets have a vintage appearance that complements both the re-claimed, 100-year old barn beams in the kitchen and the stucco finish applied by American Classic Co. on the rest of the ceiling. The largest of the beams provides a portion of the support for the doorway separating the kitchen and family room. Looking at its size, it's easy to imagine it in the doorway of a several hundred year old rural cottage.



■ Top: The warm autumnal tones in the upholstered pieces from K-Haus and the complementary rug from Oscar Isberian Rugs reflect the woody nature setting of the family room.

■ Bottom: Understated elegance is an apt description, both for the house and for the all-new 2009 Lincoln MKS.

NATURE'S WAY

build it green with DuPont



Why argue with success?

Nature's design has always been "sustainable". DuPont is committed to creating innovative materials that help builders and architects produce sustainable "green" buildings that cost less to operate, are easier to maintain and provide better comfort year round.

DuPont™
Tyvek®
HomeWrap®



The miracles of science™

Contact Matt Reed
for more information
at 1-800-338-3355

distributed by

Parksite

©Copyright 2005 E.I. du Pont de Nemours and Company. All Rights Reserved. The DuPont Oval Logo, DuPont™, The miracles of science™, Tyvek®, DuPont™ Tyvek® HomeWrap® are registered trademarks or trademarks of DuPont or its affiliates.

Also compatible is the oversized, apron-front, solid granite farmhouse sink. Given their size and depth, farmhouse sinks are as functional as they are attractive, and in this setting, the sink's appearance supports the overall design scheme.

Reversing the usual pattern, the granite countertops rimming the perimeter of the kitchen have a bolder pattern than the single, rock-faced piece of flamed limestone used for the island. Both are sealed to make them less porous, although the signs of wear that accrue over the years will enhance the appearance of antiquity of this part of the house.

Using furniture-style pieces, either as cabinets or housing for appliances, is another of the newer trends in kitchen design. At The Scottish Manor, the microwave and steam oven are tucked into a distressed,

cottage-black armoire that complements the cherry cabinets. The armoire is also part of the camouflage that keeps the advanced technology present in the house from dispelling even a small portion of its traditional ambiance.

The Sub-Zero refrigerator and freezer, both equipped with dual refrigeration technology and available from The Westy Group-Midwest, are partially recessed into the wall diminishing some of their bulk. Front and side panels that replicate the appearance of a traditional armoire, this time done in the same finish as the cabinets, add considerable interest. The dishwasher in the kitchen is supplemented by a second one in the butler's pantry.

After several decades in which form trumped function, performance-oriented appliances like The Scottish Manor's



SPECIAL ADVERTISING FEATURE

60-inch, restaurant-quality Wolf range from The Westye Group-Midwest are increasingly popular. The dual-fuel stove has two, 30-inch, self-cleaning electric ovens, a grid-dle, a charbroiler able to reach 800 degrees and six gas burners that handle everything from the slowest simmer to high-heat stir-fries. Both of the ovens are dual-convection, making it possible to cook chocolate chip cookies, garlic bread, and fish in the same oven without incurring flavor transfers. Also a plus is the built-in, dishwasher safe temperature probe that can be monitored on a continuing basis via a read-out on the stove's control panel. The arched exhaust fan over the stove is trimmed with attractive metal strips and oversized bolts that provide a medieval touch.

Along with the additional counter and storage space, the sink on the kitchen island makes it ideal for use as a supplemental area for food preparation. In lieu of the customary counter and bar stools, a seven-foot long table made from a single slice of a Bubinga tree trunk is pulled up to the island, creating a T-shaped, family-focused space ideal for breakfast, casual meals, cooking projects, and homework. Bench seating enhances the vintage ambiance and underscores the cozy warmth of the kitchen.

The distressed French oak flooring in the family room and kitchen partners well with the reclaimed barn beams on the ceiling, window trim, and tumbled stone, as do the autumnal tones K-Haus owner Kiki Luthringshausen used for the upholstered pieces in this part of the house. Warm browns, offset with touches of burnished orange and flashes of leafy green, dominate the color scheme, a palette that can withstand the heavy use anticipated for this part of the house.

The Hurd wood windows distributed by Estates Windows, Ltd. frame beautiful views of the property. In the family room, for instance, the tall casement windows on the east-facing wall overlook an especially lovely area, and given their size and placement, the view can be enjoyed from both the family room and the kitchen.

■ Opposite: From the cherry-wood Hurd windows provided by Estates Windows, Ltd. to the detailed millwork on the arched doorway, built-in bookcases, dramatic groin-vaulted ceiling, and hand-loomed rug from Oscar Isberian Rugs, the library has a regal charm worthy of a manor house.



Feel like a million bucks every morning.

Nothing is more valuable than a perfect night's sleep. A Hästens bed lets you be your best. All natural materials. Individually hand-crafted. 25-year guarantee.

Hästens 
SINCE 1852

Hästens Chicago
430 N. Wells Street
(312) 527-5337

Hästens Winnetka
976 Green Bay Road
(847) 441-5337

passionforbeds.com hästens.com

K-HAUS

INTERIOR DESIGN & RETAIL STORE



FINE FURNITURE

UPHOLSTERY

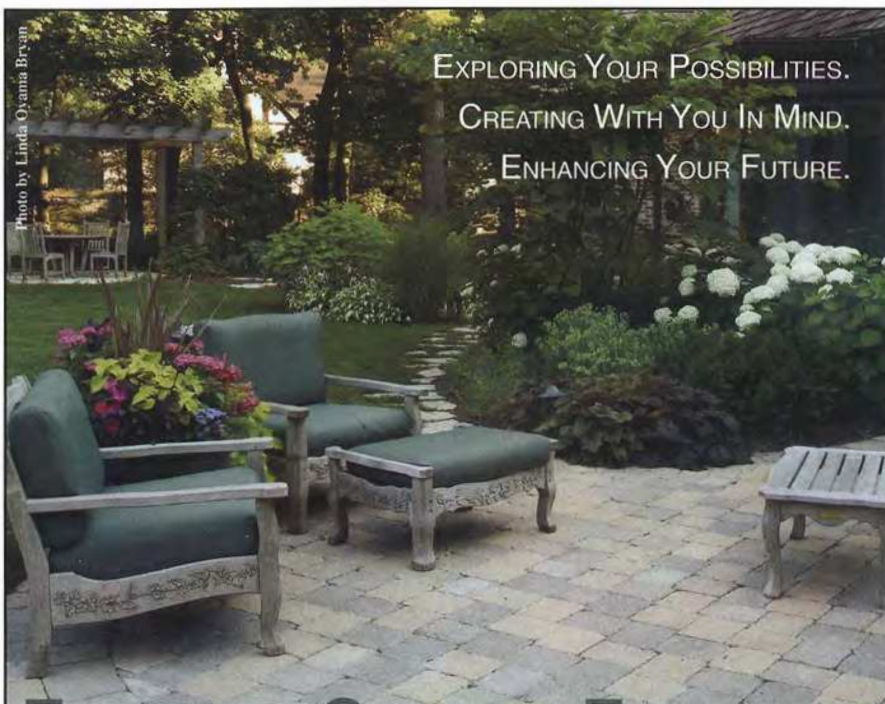
ORIGINAL ARTWORK

HOME DÉCOR

Interior design and products as featured in the Scottish Manor

ONLINE STORE AT
WWW.K-HAUS.COM

255B Parkway Drive
Lincolnshire, IL 60069
847.279.1800



EXPLORING YOUR POSSIBILITIES.
CREATING WITH YOU IN MIND.
ENHANCING YOUR FUTURE.

EXPLORING. CREATING. ENHANCING.

Martin Associates
Landscape Architecture • Construction • Maintenance



59 E. US Highway 45 • Vernon Hills, IL 60061 • 847-634-1660 • jamesmartinassociates.com

m
materials marketing

Hand-Carved Architectural Stone: Fireplaces • Kitchen hoods • Columns
Balustrades • Door & Window surrounds • Fountains & Pools • Exterior
Also specializing in: Tiles • Mouldings • Mosaics • Ceramics • Metal • Glass



Chicago: 1234 West Fulton Market Chicago IL 60607 | t. 312 226 0222

Hinsdale: 11 North Grant Street Hinsdale IL 60521 | t. 630 522 0461

Vernon Hills: 150 Fairway Drive #162 Vernon Hills IL 60061 | t. 847 816 0222

www.mstoneandtile.com

SPECIAL ADVERTISING FEATURE

The back staircases, one up to the second floor bedrooms and the other down to the leisure area on the lower level, are also lined in tumbled stone, as is the passageway to the mud room, family workshop, secondary laundry area, and the more informal of the two powder rooms on the first floor. As an added convenience, there's a secure deliveries room that can be locked from the inside to prevent entry into the house.

Attention to detail is what makes The Scottish Manor so unique. In lieu of a simple chair rail, the hallways leading from the foyer have carefully crafted, three-panel wainscoting. Even the oversized cove moldings used in this part of the house are more complex and elegant than the norm. But of all the details, it's the trim on the underside of the arched doorway between the library and foyer that raises the bar for custom millwork and gives the house a distinct, Old World charm rarely found in new construction.

The wood floor in the oval-shaped dining room is bordered with the same Travertine stone used in the foyer, a decorative detail that emphasizes the unusual shape of the room. Neither the dining room table nor the twin, wrought iron chandeliers provided by Idlewood Electric Supply, Inc. obstruct the view, either of the property or of a landscape feature that replicates the visual appeal of a walk-out basement.

James Martin Associates, Inc. used limestone boulders to create a contrived English basement with especially wide window wells that lend themselves to decorative landscaping. Shrubs and flowering perennials were placed amongst the boulders for color and added interest throughout the lower level.

Built-in features are a hallmark of custom homes, in contrast to the purposely neutral designs intended to appeal to a wide audience. At The Scottish Manor, for example, the niches built into the tumbled stone used in the doorway between the kitchen and family room are the perfect place to display family heirlooms or favorite pieces from a collection.

Positioning the living room two steps down from both the dining room and the foyer increases the height of the ceiling. It's a subtle difference that adds considerable drama to the room without sacrificing the intimacy so important to the architecture of the house.



■ The Scottish Manor offers an intimacy rarely found in homes of this size. Orren Pickell Designers & Builders provide attention to detail, such as the fir and cedar woods exterior trim provided by Edward Hines Lumber Co.



SUB-ZERO

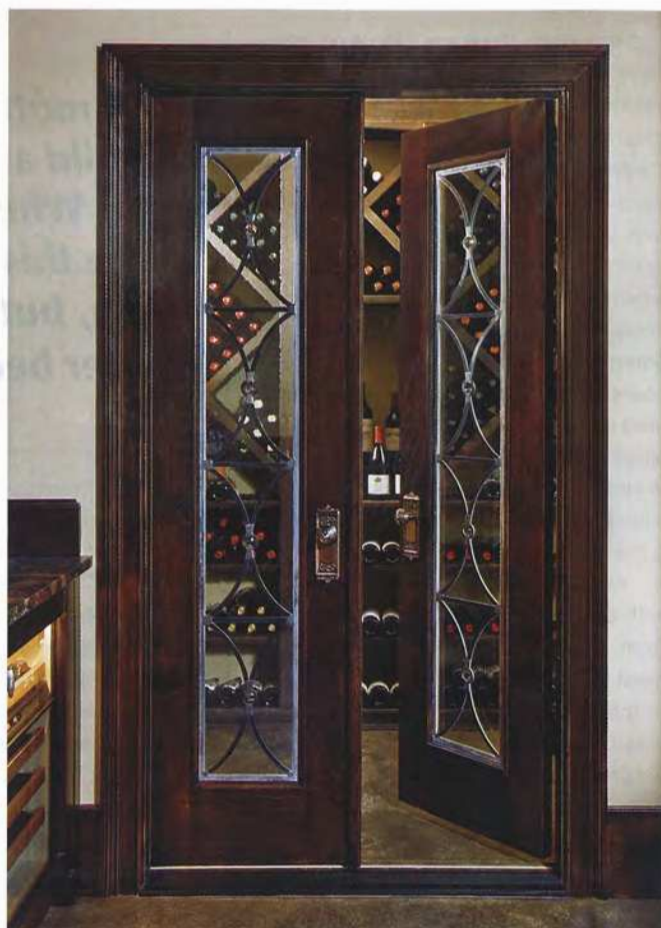
WOLF

Your ideas, as well as your food, will be preserved and prepared in our showroom.
Call to schedule an appointment. 630-872-5100

THE WESTYE GROUP

MIDWEST, LLC





Given the shape and placement of the dining room, Pickell's design team decided against a separate fireplace, a feature used in virtually every other important area in the house, opting, instead, to put the living room fireplace on a wall visible from the dining room. The natural stone mantel, surround, and hearth provided by Materials Marketing have sufficient detail to make them interesting close-up, as well as the size necessary to capture the interest of diners sitting a room and a half away. This shared design feature forges a subtle bond between the two rooms, which is especially nice given the usual, back-and-forth traffic pattern typical of a dinner party.

Even the close proximity of the more formal of the powder rooms facilitates the flow. Large parties can easily spill over into adjacent areas of the house, but when the occasion is a sit-down dinner party, the living room and dining room can handle it nicely.

K-Haus furnishings in the living room and dining room, while more elegant than

in the family room, were still chosen with an eye toward comfort. Shades of gray, now making a strong comeback after years on the sidelines, provide much of the base with brown tones ranging from chocolate to tan and touches of blue supplying additional interest. The handmade Tibetan Wool rug from Oscar Isberian Rugs is in an ombre style.

The hallways on either side of the foyer have barrel-vaulted ceilings, another of the custom touches that make The Scottish Manor visually interesting. To some degree, the ceilings also set the stage for the dramatic, groin-vaulted ceiling in the library. A feature singular enough to stand on

its own, it is supplemented by built-in bookcases and decorative wainscoting, all done in cherry wood. Because the room faces west, the light in the afternoon is especially bright, and the views from the Hurd windows are lovely. The fireplace, complete with a traditional limestone surround reminiscent of the stucco used on the exterior of the home, adds the finishing touch.

French doors with leaded glass panes separate the master suite from the hallway. Rather than opening into the main part of the bedroom, the doors actually open into a small foyer, a configuration that gives the room additional privacy.

■ Top left: Much more than a simple wet bar, the pub area on the lower level is fully equipped, both in terms of storage and appliances. Heading the list is a wine chiller and beverage center from The Westye Group-Midwest, glass-front Wood-Mode cabinets ideal for storing decorative wine flutes and beer steins, and a kegerator with a single tap.

■ Bottom left: Wine glasses serve as a stylish element to the bar as they hang from the custom wrought-iron wine tree, one of many intriguing details of the house.

■ Top right: Stocked by Sam's Wines & Spirits, the temperature controlled, walk-in wine cellar accommodates an array of wines ranging from delicate whites to robust reds.

Here again, the home's focus on family life is readily apparent. "The motivation behind the dual master was to build a home that the family could evolve with. When the children are living in the home this space can serve as a gracious guest room, but over time can become the primary master bedroom," says Orren Pickell. At a time when master suites often include exercise areas, office space, and even separate entertainment centers, this room, like its counterpart on the upper level, is configured more like a traditional bedroom, albeit a very spacious one with large walk-in closets, a wood burning fireplace, and a luxurious bathroom with a spa-style tub and oversized shower.

Abundant closet space, complete with adjustable clothes hanging systems from The Salem Hanger, eliminates the need for storage pieces in the main part of the bedroom. Walls that might otherwise be used for dressers can now be used for French doors with Phantom Screens mounted on each side of the frame. When the doors open and the screens are in

"The motivation behind the dual master was to build a home that the family could evolve with. When the children are living in the home this space can serve as a gracious guest room, but over time can become the primary master bedroom," says Orren Pickell.

use, they're drawn to the center and held in place by magnets. When they're not in use, Phantom Screens simply retract, leaving only the French doors that open onto a private patio. The comfortable double chaise can be pulled up to the fireplace, which has a striking red rock granite surround. Luxurious and wonderfully comfortable, in addition to being eco-friendly, the Excelsior King Firm mattress, box spring and top mattress from Hästens are all handmade from

natural materials for unparalleled comfort.

While unquestionably luxurious, the bathroom, like the bedroom, has a comfortable human scale. In addition to the large soaking tub, there's a walk-in shower equipped with a Kohler Digital Shower Control which functions from a single control panel designed to blend seamlessly with the wall tile. The cabinetry is topped by a marble countertop that partners nicely with the Georgian Pewter limestone from Materials Marketing used for the floor.

A Vision of Elegance



Your vision of elegance starts here at Estates Windows, Ltd. We provide the highest quality HURD® windows with an even higher quality of service. If you are looking for a hassle free experience with the best possible results—**then call us today!**



ESTATES Windows Ltd.
(847) 234-3302

950 North Shore Drive
Lake Bluff, IL 60044
www.estateswindowsltd.com

Hurd
Windows and Doors

Do the right thing—the right way—the first time.

the salem

Clothes Hanging System

Not just an ordinary hanger... it's an extraordinary clothes hanging system

3 Adjustable Hangers



Adjustability from small to XXL to prevent shoulder bumps



Unique spacer tabs keep clothes separated and wrinkle free



Wet or dry, extra wide rounded pads keep garments smooth fitting



Collar yoke keeps collar upright and garment centered on hanger



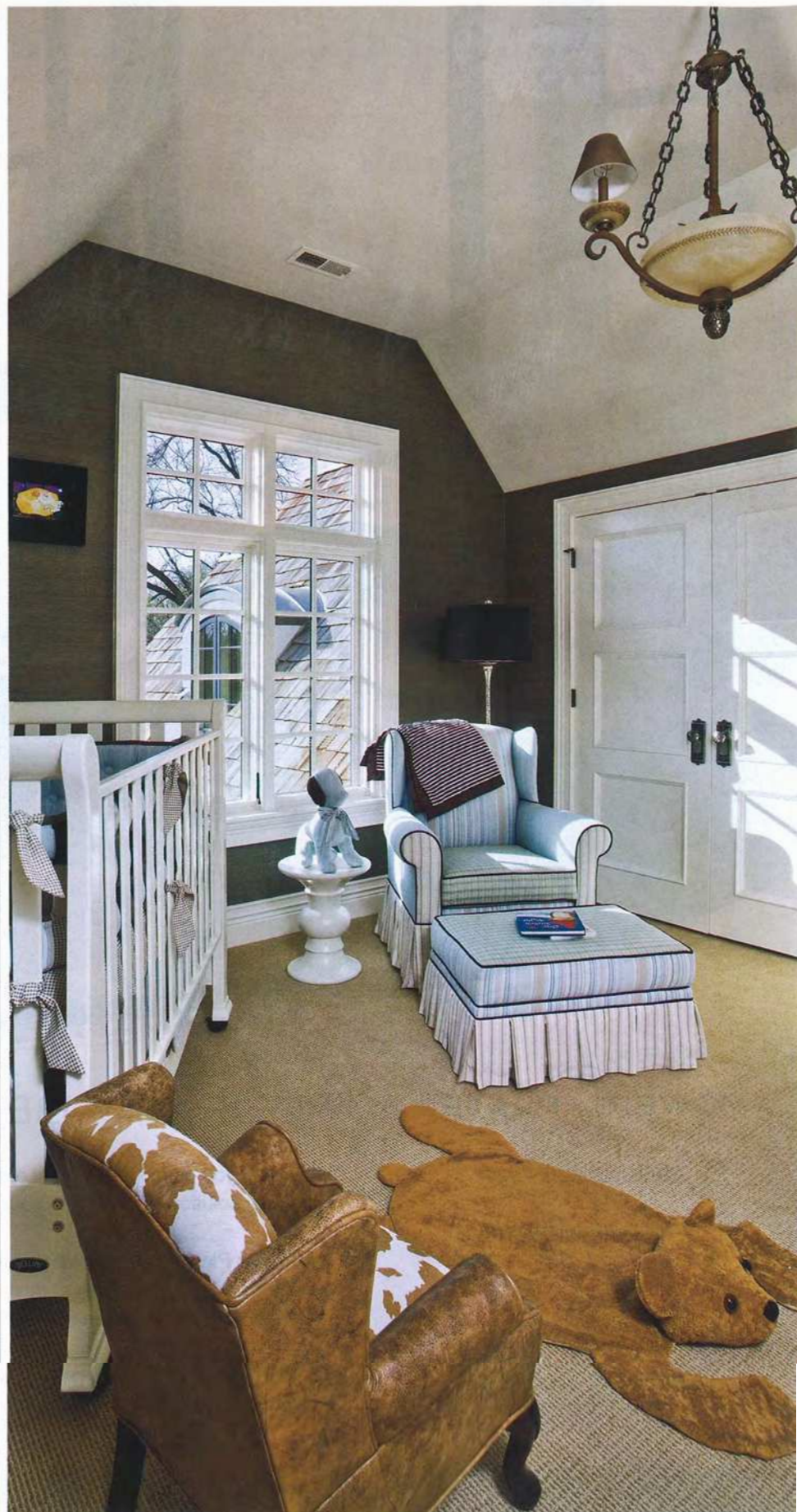
THE SALEM HANGER div.
the SALEM SOLUTIONS group

1255 Bond Street, Suite 163, Naperville, Illinois 60563

TOLL FREE 866.581.0100 TEL +1.630.717.3300 WEB thesalemhanger.com

To place an order call us toll free
866.581.0100 or visit our website
at www.thesalemhanger.com

© 2007 The Salem Solutions Group. All rights reserved. The Salem, The Salem Solutions Group logo and Clothes Hanging System are trademarks of The Salem Solutions Group. U.S. Patent 6,811,004





■ Opposite: Rather than the usual pastels and primary colors, the nursery is done in a sophisticated mix of chocolate brown and blue. Lewis Floor & Home carpet in a neutral tone lightens the look, as does the white crib from Bellini Baby & Teen Furniture that converts first to a toddler bed and then to a full-sized bed.

■ Above: Blues and browns pair nicely in the master suite on the first floor. Made by hand using only natural filling material, Hästens is known for craftsmanship and quality. The graceful lines of the bed add interest without overpowering either the simple horizontal design of the area rug from Oscar Isberian Rugs or the vibrant fabric used on the double chaise lounge from K-Haus.

■ Left: Decorative touches, from the Indian doors used as headboards to the zebra-striped stools at the foot of the beds, create a unique setting that works as well for play dates as it does for study sessions.

→ HEALTHY LIVING

The Scottish Manor was built with the finest engineered, environmentally friendly materials from Edward Hines Lumber Co. including lightweight and durable Tyvek® house wrap, a key component in the moisture management necessary for good health and durability. Taking advantage of the latest green technology and materials, there is an open cell, soy-based insulation system that limits air leakage, deals effectively with moisture, and is flame retardant. Appliances that conserve energy and resources were used whenever possible. The Manor is equipped with Lutron's energy saving lighting system. Low VOC paint and Low-E windows were used in addition to a variety of reclaimed and natural materials. There is also an advanced air-filtration system and an exercise room accessible to the entire family. The well-equipped kitchen facilitates meal planning and preparation, important cornerstones in developing and maintaining a healthy diet. And given the beauty and expanse of the setting, outdoor activities are possible year-round.



■ Top: Furnished with PowerPlate gym equipment and a mix of 2nd Wind Exercise Equipment, the exercise room on the lower level accommodates the needs of the entire family. PaviHome, distributed exclusively by Kiefer Specialty Flooring, Inc. provides the perfect surface for a brisk workout.

■ Bottom: During the day, the gorgeous Hurd windows provided by Estates Windows, Ltd. frame a picturesque outdoor view. Come nightfall, the Idlewood Electric Supply, Inc. light fixture illuminates the elegant master suite bathroom on the first floor.

■ Opposite: Soft grays and blues, both in the tile from Materials Marketing and the hand-rubbed walls by American Classic Co., contrast nicely with the dark tones of the Wood-Mode vanity and the delicate crystals in the Idlewood Electric Supply, Inc. chandelier.





NEW OWNERSHIP
& LOCATION

CUSTOM BEDDING

ACCESSORIES

CLOTHING

STROLLERS

GIFTS



1800 N. Clybourn, 3rd Floor • Chicago, IL • 312.981.6301 • bellini.com
bellinichicago1@gmail.com • Hours: M-F 10-6, Sat 10-5, Sun 12-4

...where perfect nurseries are conceived!

THE ULTIMATE ONE-STOP SHOP



CARPET • AREA RUGS • TILE • COUNTERTOPS • HARDWOOD
WINDOW TREATMENTS • CUSTOM CABINETRY • GREEN PRODUCTS

With over 30,000 square feet of showroom between two Chicagoland locations, Lewis Floor & Home is the ideal destination for homeowners, custom home builders, architects, design professionals and commercial businesses. Stop by our Northbrook showroom to view our new line of custom cabinetry on display in our kitchen and bath gallery and experience the Lewis difference.



*Proud to be a sponsor in Chicago magazine & Chicago Home + Garden's 2008 Showhouse
The Scottish Manor by Orren Pickell Designers and Builders*

www.lewisfloorandhome.com

1840 Skokie Boulevard, Northbrook, IL 60062 847.835.2400 • 1455 W. Fullerton, Chicago, IL 60614 773.935.9599



**Chicago's largest
selection of wine,
beer & spirits!**

**PRIVATE PARTY
SPACE!**

**WINE, SPIRITS &
BEER TASTINGS!**

**CELLAR
CONSULTATIONS**

**GOURMET
FOOD MARKET!**

**WINE & SPIRITS
SEMINARS**

AND MUCH MORE!



Lincoln Park | 1720 N. Marcey St. | 312.664.4394
South Loop | 50 E. Roosevelt Rd. | 312.663.9463
Downers Grove | 2010 Butterfield Rd. | 630.705.9463
Highland Park | 1919 Skokie Valley Hwy. | 847.433.9463

WWW.SAMSWINE.COM



Having two master suites gives The Scottish Manor's floor plan considerable flexibility. When the children are small, an upstairs bedroom is ideal. Later, when the children are grown, the house easily transitions to single floor living. In the meantime, the unoccupied bedroom can be used as a very private and very comfortable guest or in-law suite.

Both the upper and lower levels can be accessed either by the staircases in the foyer or in the area adjacent to the family room. The upstairs master suite is next to the latter, and in keeping with the overall plan, the staircase and hallway are both finished in tumbled stone, a simpatico match for the bedroom's arched—and very baronial—planked oak door. Were a knight in shining armor to suddenly materialize, he wouldn't look out of place.

Like its counterpart on the first floor, the bedroom has spacious walk-in closets.

Some of the furnishings are in the Euro-modern style in vogue in the '20s and '30s, with Art Deco influences showing up in a nicely detailed silver chest and elsewhere. Warm tones dominate the color scheme, especially in the exquisite Oriental rug from Oscar Isberian Rugs at the center of the room. The settee near the fireplace is covered in a cut velvet fabric with a raised leaf pattern done in charcoal brown, while a simple link design in a soft shade of tan is used for the upholstered headboard. French doors leading to an east-facing balcony and a fireplace with a carved stone mantel complete the setting.

The honey-toned tile in the bathroom is paired with black accents and black St. Laurent marble countertops. There's a separate water closet for the toilet and bidet, and the walk-in shower is generously proportioned. Even so, the star of the show is the infinity-edged chromotherapy soaking tub guaranteed to soothe anyone's spirits.

There are four other bedrooms on the upper level, all with interesting design features. Dormer windows recessed in arched alcoves show up in several of the rooms, a configuration caused by the angles in the roof. In the girl's room adjacent to the circular staircase, there's a dramatic curved wall. This same room has a floor plan that offers the option of separate spaces for study and sleep.

Shades of brown show up again in the color scheme used in several of the bedrooms. Brown is paired with pistachio in the boy's room and with pink in the girl's room. And in a departure from the usual reliance on pastels or primary colors, the nursery is done in a sophisticated mix of chocolate brown and blue grasscloth that would be as appropriate for a teenager as it is for an infant. The crib from Bellini Baby & Teen Furniture is equally flexible, since it converts first to a toddler bed and then to a full-sized bed. Carpeting in the bedrooms, all from Lewis Floor & Home, range in neutral shades from glowing white to dusky brown.

Complete with a Scottish pub and a large fireplace wrought from the distinctive stone used throughout the casual areas of the house, the lower level can easily accommodate large gatherings on sports-centered occasions like New Year's Day and Super Bowl Sunday. With this in mind, the design team included two oversized television screens. The first fits into a built-in credenza with controls to raise the screen for viewing and lower it for storage. The second screen is camouflaged and mounted behind a two-way mirror, so the television can only be seen when it's on.

So evocative of the Scottish countryside that you half expect someone with a distinct burr to announce "last call," the pub area is more than a wet bar. In addition to the sink, a temperature-controlled unit serves as the perfect preservation room for wine stocked by Sam's Wine & Spirits, a kegerator, and a combination refrigerator and freezer with an ice maker. A dishwasher drawer is also included, along with ample storage cabinets. The casual ambiance and location of the room is well-served by the attractive custom stained concrete floor partnered with an area rug.

■ Opposite: Adjustable hangers from The Salem Hanger keep clothing wrinkle-free and prevent shoulder bumps.



Pavi Home

Lifestyle Flooring For Your Home

Easy To Install • Low Maintenance • Anti-bacterial
Hypoallergenic • Waterproof • Three Thickness Options
Mold Resistant • Soft, Textured, Non-slip Surface
Variety Of Colors • Easily Create Dynamic Floor Patterns

Call 1.847.245.8450 or visit www.pavihome.com

Receive \$100.00 toward your PaviHome purchase of \$1,000 or more. Use code CMAG808 when ordering. Expires 10/31/08. Not valid with any other offer or previous purchase.

Ideal For:

- Home Fitness
- Rec Rooms
- Basements
- Home Offices
- Bedrooms
- Playrooms

Featured in the Scottish Manor concept home by award winning designer Orren Pickell.

Phantom Screens:

Your Choice for Retractable Screening Solutions



Phantom's screens pull into place when you need them and retract out-of-sight when you don't.

Custom fit to any application, Phantom's retractable screening solutions provide solar shading, additional privacy, and preserve your home's beauty with designer and custom colors.

Visit our website at www.phantomscreens.com
Contact INTERIOR TECTONICS
an authorized distributor of Phantom Screens
at 312 664 5503

 **PHANTOM**
SCREENS

True to you. Pure Phantom.

American Classic

Painting • Murals • Drywall
Plaster • Faux Finishing



Since 1987, American Classic has provided quality professional interior and exterior painting services ranging from large residential to smaller interior jobs.

847-680-4056
www.americanclassic.com

Photos by Linda Oyama Bryan



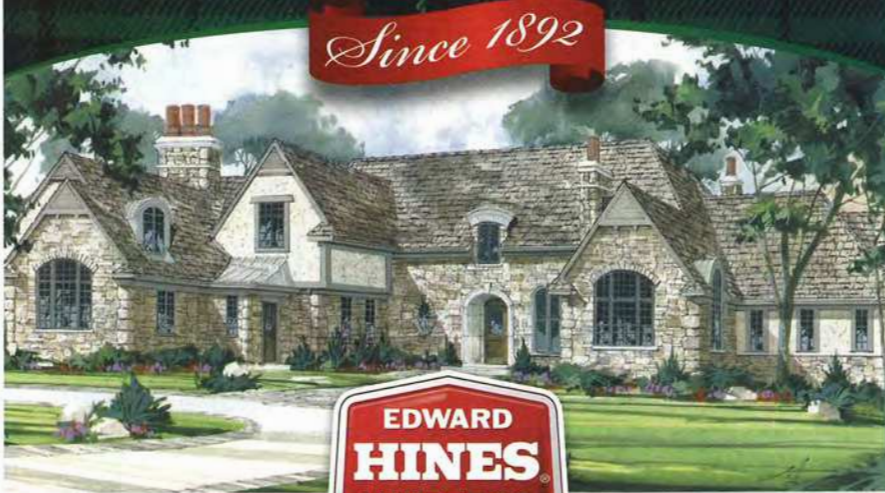
SPECIAL ADVERTISING FEATURE

Down the corridor to the exercise room, the synthetic and interlocking PaviHome flooring, distributed exclusively by Kiefer Specialty Flooring, features a soft textured, non-slip surface that is warm to the touch and feels great on bare feet. This invigorating room features 2nd Wind Exercise Equipment and PowerPlate gym equipment. PowerPlate equipment offers a host of benefits including an immediate improvement in blood circulation among a variety of other measurable outcomes. A powder room comes off the hall leading to the lower level foyer where the semi-circular staircase from the back of the house ends. All three of the contrived English basement window gardens are visible on the lower level, two of them from the leisure room and one from the exercise area.

There are two large storage areas on the lower level, which is where many of the systems used throughout The Scottish Manor are housed. Building on the flexibility inherent in the overall floor plan, there is also room for another bedroom and bath. Heading back up the stairs to the main level, it's easy to imagine family life at The Scottish Manor, from a mid-summer breakfast on the porch to a casual family dinner or a special celebration during the holidays. Beautifully designed and meticulously handcrafted, it's a home ready to be lived in and cherished now and for generations to come, a future eased by Pickell's unique lifetime warranty program maintaining homes as a lasting family legacy and always ensuring that every home is a superb value and investment. ♦

The Midwest's Premier Supplier of Quality Building Materials

Since 1892



For expert, friendly advice on the "green" FSC Chain-of-Custody certified products you want contact:

Bill Maniates, North Chicago Branch: 847-689-9000

Mike Hume or Mike Engen, Commercial Division: 847-353-7770

Lake Forest Bank & Trust

From lot financing to construction loans to the end mortgages, **Lake Forest Bank & Trust** can help you get the best interest rates in the marketplace. Lake Forest Bank & Trust also provides superior service to insure that you are completely satisfied. Call 847-234-2882 or visit us online at lakeforestbank.com for more information.

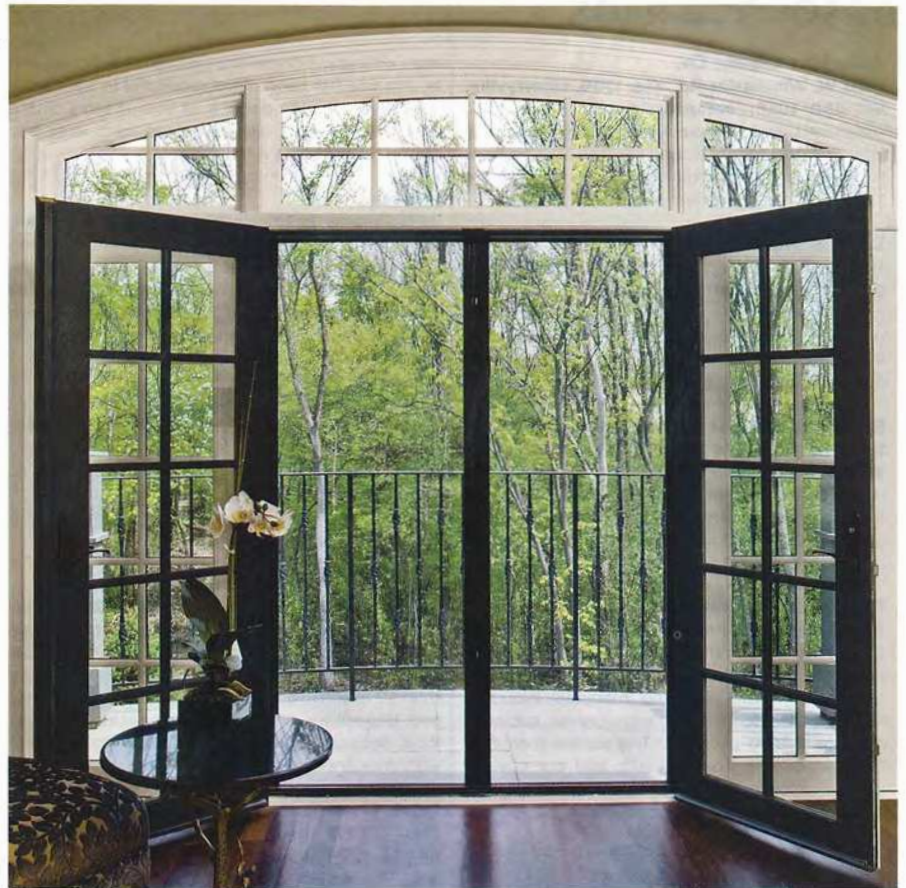
Baird & Warner

Baird & Warner is proud to have been selected as the exclusive representative for Orren Pickell's developments and real estate holdings. For additional information on the Scottish Manor and Tarns of the Moor, contact the Baird & Warner Tarns Team at 847-234-1855 or info@bwtarns.com

→ Hidden Technology

To preserve the home's architectural integrity, the technology so important to the modern lifestyle is either hidden or well-camouflaged. The Lutron lighting system makes it possible to control lights anywhere in the house or on the property from a single switch, and the same is true for the audio system. A 50 inch television screen is integrated into the mirror in the pub, and large screens disappear into credenzas in both the leisure room and family room. Furniture-style armoires in the kitchen house many of the appliances, giving the room a traditional appearance unblemished by a surfeit of blinking control panels. And even in the master bathroom on the first floor, the technology necessary to control the shower is designed to blend into the wall tile and eliminate valves.

■ French doors by Hurd windows provided by Estates Windows, Ltd. let the fresh air in while Phantom Screens, distributed exclusively by Interior Tectonics, keep the wildlife out.



HomeWorks® | Sophisticated control system for lights and shades



Showcase your most elegant homes with light control by Lutron. Scalable systems tailored to your customer's distinctive tastes can be integrated into any new or existing residence.

HomeWorks premium light control solutions provide an energy-efficient way to create ambiance inside and outside the home.

Visit our amazing lighting fixture showroom. Our staff of professionals will help you design the perfect solution to fit your needs! Call Idlewood Electric Supply at 847-831-3600 or visit idlewoodelectricsupply.com.

