

CHICAGO

HOME & GARDEN

LATE FALL 2003
\$4.99

SEEKING
Serenity



www.chicagohomeandgarden.com



CH&G 2003 DESIGN HOUSE

Adventures in Refined Living

BY SUSAN LINK OLSEN
PHOTOGRAPHY BY
DAVID SCHILLING

It's an easy ride from Chicago, wending your way to Lake Geneva and the 2003 Chicago Home & Garden Design House. The road leading to the South Shore Club, home to the Design House, hugs the shoreline, and harbors fields of daisies and wildflowers alongside a hilly countryside that seems for a moment to need only vineyards to complete the feeling of "old world" that emanates from each mile. Enormous trees form a green arch over the road, making the ride cool, even on a warm day.

Split rail, stone, and iron fences encircle homes built when wrap-around porches and awnings were in vogue. The pastoral setting, a reminder of yesteryear and a foretaste of what is awaiting you at the gem by the side of the lake, the Chicago Home & Garden Design House.







MAISON CHALEUREUSE

Chaleureux, explains French Canadian designer Richar, is the perfect word to describe the CH&G Design House. "Warm, inviting...it says it all in one word," he translates.

It is no coincidence that a French word meaning gracious should cross his mind, as he begins to talk about his design philosophy for the house. The same vision was paramount in Orren Pickell's mind when he drew up the plans for the home and worked with his design team and architects at Orren Pickell Designers & Builders for a house he wanted first and foremost, to emote a welcoming, timeless, old world charm. He chose Lake Geneva as the idyllic setting to pay homage to the French countryside – a place he could maintain the chateau character he and his team had studied in a trip to France to prepare for this project.

Orren Pickell's and Richar's visions melded perfectly and the result is the CH&G Design House, nestled in among the knotty 100-year-old oaks and maples that provide a resplendent ceiling over the Lake Geneva estate.

Making your way down the cobblestone path from the main road to the South Shore Club that hosts the Design House, one is given a glimpse of its old world influence. A French chateau awaits near the water, with a low stone wall surrounding the side patio, forged into a hand-troweled texture by using several plasters to give it a weathered, seasoned, patched look, that appears as if the seemingly crumbling wall, topped by overlapping shingles of slate, is aged and full of history.

This sense of the European countryside is the first hint of what our French chateau holds inside.

ENTRANCE

Enter the arched wooden front door and you are immediately aware of being back in another time, another place. "Orren Pickell creates a romantic architecture, exuding nothing but charm," says Richar. "I wanted to exude just as much charm in the interior's material selection, the millwork, the fabric textures, and the furnishings," he notes.

"And because it is assumed a weekend getaway on the shore, I wanted to bring the hues and colors outside, inside the house, so it can flow with the environment."

The appearance of some shade of a palette of lush greens is in each room. That was an easy choice for him, Richar muses, as he discusses how he envisioned the Design House's décor before the house was even built. "As a designer, I try to capture the feeling of the home in my mind's eye and reflect it in the fabrics, the furniture and the accessories in each room," he says. In the case of this home on the shores of Lake Geneva, the choice was clear – greens, chartreuses, aquamarines, offset by other colors of nature – cinnamon, terra cotta, and shrimp. Textures reflect nature in leathers, soft supple velvets, pebble floors, limestone, and rich woods with veins of color coursing through each plank and board.

"For example, I suggested and specified a flagstone walkway inspired from the exterior and integrated it through the house, flowing the richness of the material from the entrance of the house, to the kitchen, to the mudroom, and into the powder room. We've also crafted the floor with wide planks of beveled and hand-hewn wood," he adds, to achieve the French farmhouse charm that unites and surrounds every inch of the home.



LIBRARY

Oscar Isberian's runner with muted tones of moss green, gold, and cranberry, anchors the library with a solid but beautiful foundation over the hand-hewn plank hickory flooring. The pewter fireplace tools and screen with a woven braided trim are a handsome and earthy addition from CAI Designs.







A vintage writing table from Pine & Design establishes the Country French theme that runs throughout the house, creating an idyllic setting for the chateau look. The thread of cranberry in the runner is further complemented by the cranberry tones in Calendonian Antiques' wing chair with English mahogany that coordinates with the draping in a beautiful textural tapestry. A William Yeoward crystal decanter flanked by an oversized Olympia Burgundy wine goblet from Peachtree Place suggests a cozy evening in front of the fireplace.

LIBRARY

Wood plays an important role in the library, which is dressed in an intimate combination of textures and earthy shades of green. "I did a painted distressed finish to the fir millwork in the library to look like it is worn and old," Richar advises. "Faux boiserie [custom paneling and millwork], sparks the imagination, evoking a sense of rustic country chateaux," he points out.

Textures further enhance the aged charm throughout the room, with varied patterns carefully orchestrated to recreate nature indoors. A soft, green leather encases the wing chairs

and a vintage writing table is chosen to meld with the room's distinctive wood trim. A richly textured throw draped over the ottoman wraps the room in elegance and luxury.

Weathered, hand-hewn fir surrounds the fireplace, which is further ensconced in bold stone columns standing sentinel on either side of the hearth.

Warm lake breezes find their way in through open French doors and the entire room is sheltered outside from the morning sun by a mammoth old oak tree guarding the library windows.




DINING ROOM

Colors are planned to blend into a distinctively restful palette in the Design House, explains Richar. "I chose a common thread, shades of greens and shrimp. Just as the environment has different shades of green, - a 'mélange' - so do

we employ a color scheme rich in its hues of nature. Shades of shrimp play off the greens, a choice which is totally flattering to anyone," he teaches. "Everyone looks good in this combination day or nighttime . . . it glows."





The dining room table with a Cooper base and parquet top by Barbara Pearlman, establishes the consummate foundation for Benden Williams' table setting of "Bellevie Antheor Carcassone." The raspberry chargers spotlight the cream dinner plates and yellow cereal bowls, accessorized by William Hite's Collection of "Montespan" clear amber flutes and wine goblets, also from Benden Williams. Two matching custom cut stone Whitney consoles by Murray's Iron Works hug the fireplace, topped by large chartreuse earthenware parrot urns holding greenery interspersed with seasonal greenery by Toni Lenzi from "simply flowers."

CH&G 2003
DESIGN HOUSE
Adventures in Refined Living

DINING ROOM

And in order to boost these hues, "I have opted to go with more ambient lighting, such as hanging lanterns, lamps, and portrait lights, versus an overuse of recessed lighting," compares Richar, "which we used only for specific focus on walls or objects for highlighting. The lantern hanging over the dining room table is the first of several used to achieve this romantic effect. Enriched in latticework, "the garden effect in the dining room is well married with the floral look we bring in from the garden," he points out. The latticework inspires a repeat of the outside garden trellis at nighttime, taking full advantage of the glow of assimilated candlelight moving through the lamp's iron grid work and reflecting off the walls.

The sparkling light from the room's fireplace is blended and diffused in this restful décor. Pine cabinetry, designed by CabinetWerks, glazed to a soft glow, further emphasizes the natural look. "You'll see the drapes in Scalamandré's "Fleur Baroque" pattern introduced in exquisite colors in this room," he says, which we'll meet again in the great room, and again in the breakfast nook. "These gorgeous shades wear well. You can live with this forever...the fresh shrimp and moss green." The dining room flows easily into the sun-dappled great room with no walls to interrupt.



The pottery sunflower water vessel comes from Table Manners, bringing scale and color to this rustic table setting.



(above) Inside the hearth, a copper cauldron from Peachtree Place cradles large white birch logs, ready as firewood for a warming fire on the first fall evening of the season. (right) Fir wood is used for the Great Room's ceiling beams, held together by handsome forged iron brackets.

GREAT ROOM

Richar explains why he finds this room's scale to be so interesting. "I personally feel that smaller rooms are more intimate when you use larger scale furniture pieces. It contributes to the illusion of 'grandeur.' That's a personal thing for me. I think larger scale furniture in a small space works. People might feel that this room is a little tight, but we did it on purpose," he says, using scale as a surprise in his design blueprint.

Richar enjoys introducing something unexpected into each room, something stunning, maybe playful, often surprising. In the great room, it's the handmade rug by Hokanson, blending each color in the room into one of its stripes. Hickory floors provide the perfect base for this rug, which Richar affirms is "very simple in design but bold in color. As bold as it will be, it will still be toned down by our shades of shrimp, moss, and chartreuse. We even have a touch of raspberry in there."

Stepping into the great room is like stepping into a garden laden with the lush greens and corals of a spring bouquet. The soft and luscious leather of the Vincent Frank ratchet sofa, which grounds the room, accents Scalamandre's drapery fabric. Studded with nail heads, its pewter trim conspires to evoke a true European flavor.

A large flagstone fireplace is accented with a fir mantel, meticulously hand hewn and oiled by craftsmen who well understand how to bring out the natural shadows and reflections waiting to be discovered in beautiful wood.

Three sets of French doors lead out to the patio with breathtaking views of the lake. Off to the side of the great room is another set of French doors opening to the screened in porch, which occupies a prominent place from which to enjoy the lake's activities. A quiet sanctuary, the porch coor-

dinates well with the adjoining great room, while at the same time maintaining its distinct personality.

"The porch is more than just an extension of our tone," Richar points out. "The bold stripe in the fabrics is a relief from the baroque of the living and dining spaces, yet it's an extension of the color thread." Here, especially, the outdoors is infused with the indoors, creating a retreat for informal dining or simply a restful private spot to gaze at the magnificent shoreline of Lake Geneva and relish a moment of the lake breezes.

Nature is at the core of this home and the goal of bringing the outside in is so all-encompassing, that in the porch, no less than in all the rooms, the celebration of combining colors and textures from nature is, at once obvious, and yet unnoticeable in its ease.

An African mask from Primitive Art Works adds textural variation and interest against the smooth, shiny, bronze table from Richar's personal collection.



The elegant leather and tapestry ratchet sofa, reinforced by Charles Pollock's Santa Fe table lamps, ground the high ceilings and anchor the great room. Les Tissus Colbert's vintage gateleg tables act as warm yet stately bookends on either side of the moss green sofa. ILT Vignocchi's palms and ferns bring nature in with even deeper shades of green. Seated near the plaid Schumacher chairs is Les Tissus Colbert's small oval wooden table with bamboo design trim, perfectly designed for holding a cocktail and hors d'oeuvre. The center of the room is an ideal location for the grand French antique ottoman that presents itself as a coffee table as well as a tabletop to host the luxurious leather albums from Peachtree Place - albums that will forever preserve memories and celebrations in this wonderful weekend getaway.



BREAKFAST NOOK



(right) The Perfect Setting is indeed perfect for providing the decidedly upscale accouterments for the Baker table and armchairs from Toms-Price. William Hite place settings are flanked by Tracey Porter pewter and stainless "Precarious Twist" flatware and hand blown juice glasses, all from The Perfect Setting. The Thomas Job lantern suspended over the center table is a further elegant touch – dressy but stately – just the right combination for the breakfast nook. The French doors, as is the case with all the doors in the house, are fitted with custom hardware from Contract Builders Hardware.

Returning from the porch inside to the great room leads one back into the continuation of the easy flow from the dining room, to the great room, and to the breakfast nook. This open space, undeterred by walls and doors, is yet distinctively divided into a traditional room through Richar's design and choice of colors and fabrics.

Natural light streams through the floor to ceiling French doors, infusing the space with the seasonal changes outside. Each space's windows and doors wear the Scalamandré fabric so rich in color, yet so restful in tones and expression...all fabricated by Creative Window Design. The French doors in the breakfast nook lead to the patio, erasing the lines that define outside and inside. Wide ledges along one side of the nook allow room below the window for collections and plants or ample space to serve an informal buffet supper.

Yet, "our breakfast nook is not typical," announces Richar, "in the sense that it's more formal than anticipated. But that's because it's in such close proximity to the great room."

The "Fleur Baroque" draping adjusts well to this formalization, where careful orchestration is used to adorn the views of the lakeshore and recreate nature within.

The chairs are clad in a Schumacher plaid that is more formal than one would normally choose for a breakfast nook, suggests Richar. "It's practical but not as 'kitchenette' as you might expect. I've chosen a more semi-formal fabric as a way to maximize the flow from each room so that this will not be foreign to what's next door in the great room."





Accessories from NDI Natural Decorations, Inc. abound in the kitchen, where bottles of artistically created pickled vegetables and fruits ornament the kitchen counters. In a home that may, at times, be used exclusively on weekends, natural looking flora is a "must" to prevent high maintenance of house plants. Dual Viking double ovens, dishwasher, microwave, and refrigerator, provided by Lakeview Appliance Distributing and Dacor's range, warming drawer, and fan hood outfit the kitchen with top-of-the-line appliances. A corner of the open kitchen (foreground) is saved for a bar, where another Viking dishwasher for glasses and a wine refrigerator furnish the niche with appliances for entertaining. A small round hammered silver sink reflects the beauty of the sterling sink across the room. The Old World looking cassoulet casserole from Peachtree Place awaits ingredients for a hearty fall dinner and accompanying canisters rest on the marble countertop. Toni Lenzi gathers sunflowers in the antique wooden bowl on the sink counter, where topiaries enliven the windowsill with other natural greens. Table Manners sets an inviting breakfast bar with their place settings of "Cassis en Provence," nestled in wicker chargers.

KITCHEN

The decision to keep walls to a minimum affects the way in which the kitchen plays a prominent role in the traffic flow for this home. Here, easy conversation and visiting is enlivened by the proximity to the dining and great rooms and the breakfast nook. CabinetWerks provides a state-of-the-art custom design that captures the essence of a dynamic kitchen, but also fits eloquently into the easy flow of the house. CabinetWerks Director Dave Heigl explains, "We wanted to capitalize on the lake views, so kitchen walls were omitted. Whether you have weekend guests, or just a family dinner, everyone ends up in the kitchen and in this kitchen, you can converse with those in the breakfast room and great room. It's more casual...it's a vacation home...that's what drove the design, not a lot of frills. Keep it simple and functional. By having two countertop levels, whether a buffet or catered affair, two levels allow for easier access."

Normal kitchen clutter hides behind appliance garages. Eight small mailbox drawers are flanked by niches holding four large sturdy, sliding baskets for additional storage. A spacious walk-in pantry outfitted by Closets & Storage Concepts accommodates ample shelving for canned goods and a good place to tuck in kitchen accessories.

A hood patinaed to look like old zinc adds an aged charm to the kitchen as it hovers over the Dacor range and warming drawer. "Knotty pine cabinets in a light stain contrast with the dark walnut floor," observes Richar, pointing out the elegance that WoodMode Fine Custom Cabinetry brings to the room. "We're playing the highs and lows against each other. It's a wonderful visual contrast of shades of color."

For accent and drama, Richar has chosen a color for the wall above the window that "is a bit like tangerine, but deeper. Let's call it cantaloupe," he suggests, inviting the light cabinets and white stone to borrow its warmth.

"The showpiece is the silver sink provided by Aquaworks," he announces. "I loved the finish – it's so 'old world' – a total extravagant use of material, but how chic. Silver has so much depth and warmth to it," he adds, wrapping the kitchen in further luxury. The sink, crafted by the German Silver Sink Co. is made by hand, with the original "s" curve design and a dimpled and imperfect surface. The soft metal helps protect clay and ceramics from chipping.

"What is especially exquisite in the kitchen is the stonework," says Richar. "The backsplash – a pillowed marble stone applied in a chevron pattern is really quite spectacular and chic."

Using white marble for the countertops, Richar admits, may seem impractical to some. "But we've honed the marble to lessen the possible everyday wear and tear. If it's polished, it might show stains," he warns. "This marble won't. People pay a fortune to get stone with a patina worn from Europe. Relax, that's the charm of it. The obvious wear is the beauty. We're creating memories here...it's a lifestyle. If it's lived in, it allows the aging of the home to take place."





LAUNDRY/MUD ROOM

This corner of the first floor houses the laundry room which is anchored by a washer and twin dryers. Its proximity to a side entrance dictates its dual role as a mud room with an antique looking wood built-in storage chest of drawers, topped by a low seat, a resting spot for young children changing shoes, sandals, or boots. A wooden back climbs up the wall, topped with a long line of knobs for hanging jackets or wet bathing suits. Don't worry about the not-to-be-avoided drips falling on the unit's bench seat and

counter top. Cambria's quartz surface is crafted as a seat to be totally care free, while radiating a depth and richness in its natural stone clarity.

NDI Natural Decorations, Inc.'s rye grass and orchid plant, and a painting from Proud Fox Gallery, Petkov's "Poppies in Vase," add a dressed-up look to a utilitarian space.

Hanging lanterns find their way into this room, enveloping the space in a glamorous glow from the outside, looking in.



(above) A Viking wine refrigerator, icemaker, microwave, and dishwasher provide the kitchen area with the components necessary for easy entertaining. Handsome Wood Mode cabinetry blends seamlessly into the European charm. The custom made corner entertainment center armoire is by Mastercraft.
 (left) New Metal Crafts' vintage, iron scrolled sconce adds a dressy touch to the family room entrance.

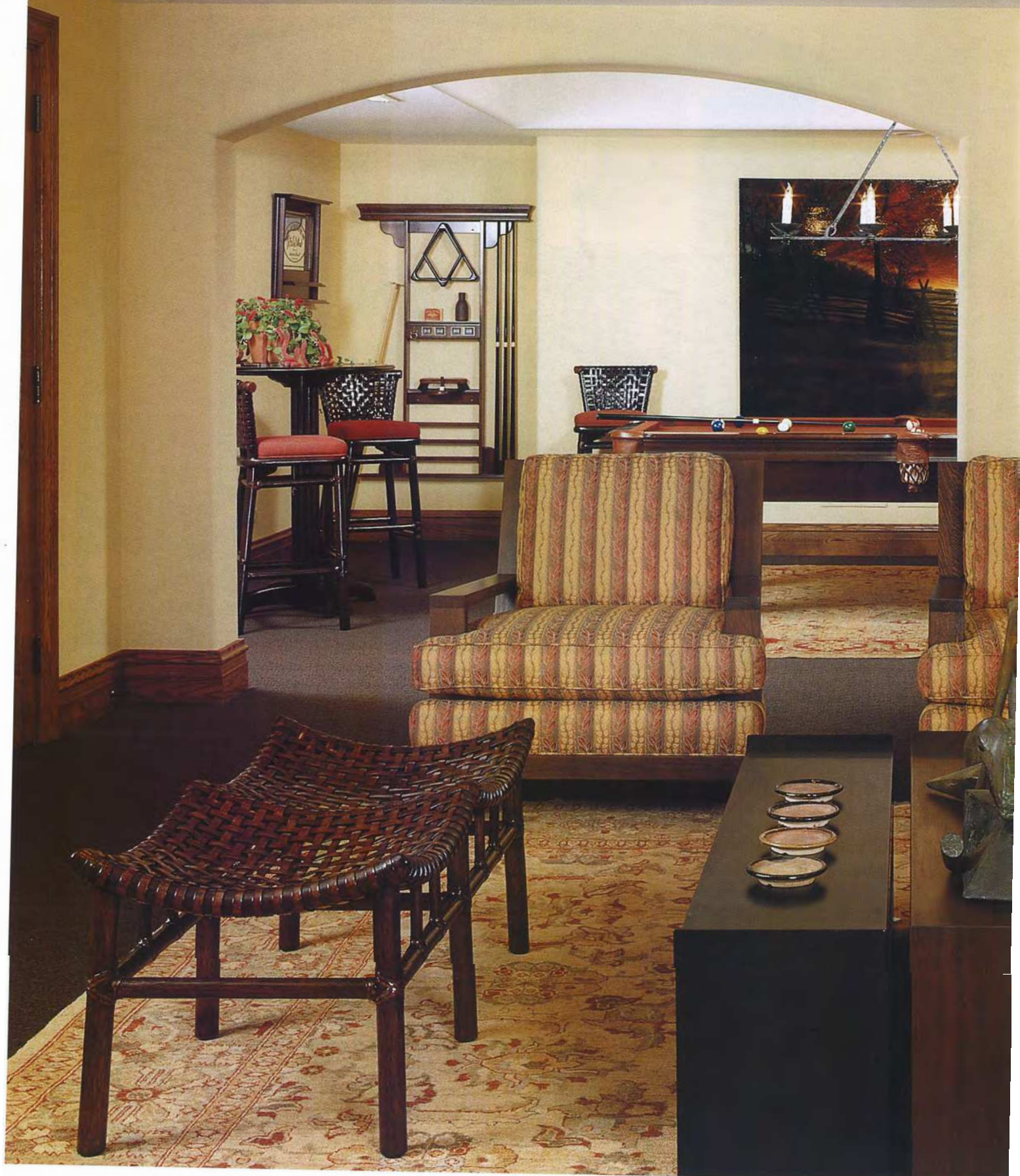
FAMILY ROOM

Walk through an arched entrance that leads to the billiard room, the heart of which is a handsome Olhausen billiard table. The adjacent, expansive family room is centered with a fireplace set back into a niche carved into the wall. The hearth is enhanced by low stone seats accessorized with straw cushions that provide a perch for logs or a cozy spot from which to gaze at the fire, where one can almost imagine a large pot of bubbling soup hanging over the open hearth a hundred years ago.

"I opted for a non-descript earthy colored wall-to-wall car-

pet with throw rugs over them for acoustic reasons to accommodate the audio visual needs in this room" explains Richar. "But the surprise is the bold color we're using for the sofa that gives a club-like, warm ambiance, inviting you to sit down, visit, relax, or party. That is the bottom line," reminds Richar...the entire theme of this house. Inviting.

Off to the side, to insure easy entertaining, the room opens to a small kitchen equipped by Viking. Nestled into the counter is a small round silver sink echoing the stunning one we first saw in the main kitchen upstairs.





Les Tissus Colbert tables flank the large sofa, topped by large Mariposa glass lanterns from Peachtree Place. A tall wine armoire from Pine & Design lends Old World charm to the area.

FAMILY ROOM

Steps leading downstairs open onto the changing area where family and guests can begin heading to the beach and lake. Closets and storage abound.

Lustrous pine cabinetry cradles a long marble sink. The room opens to a shower and changing area, ready with shelving and rods to hold towels and clothing.

(right) Olhausen's billiard table from Cue N' Cushion and accessories provide the perfect entertainment for indoor fun, nestled into a spacious area that leads into the family room. Four paintings from Mary Bell Galleries are found on the walls of the billiard room – two by Vincent George and two by Ivan Reyes. An Oscar Isberain rug rests under the billiard table as well as in the family room, adding warmth and coziness to the décor.

(below) Gordy's Lakefront Marine outfits the changing area with boating accessories, tubes, wake boards and water skis, encouraging guests to participate in the water activities so much a part of life at Lake Geneva. Wet suits, life jackets, and swimsuits hang in the closet, ready to be pulled from the hangers and worn for a day of fun in the Cobalt 262 I/O 26-foot boat Gordy's has parked next to the driveway.





UPSTAIRS

Walking upstairs to the bedrooms, we encounter a window seat at the top of the stairs, offering a private nook with open windows to the lake. The early English table comes from Les Tissus Colbert. A cane chair is off to the other side of the hall in a reading nook, anchored by an antique chest, also from Les Tissus Colbert.





(above) Ann Nathan Gallery's metal pie safe, a unique storage unit, contributes to the distinct feeling of a sitting room, rather than a bedroom. Baker Knapp & Tubbs daybeds from Toms-Price reinforce the image, yet provide an easy conversion to a guest bedroom, if needed. Extra quilts find a safe hideaway in Pine & Design's carved wooden antique trunk. All the carpeting in the house is from Lewis Carpet One. The wool looped upstairs carpeting is a unifying element for the bedrooms and hallway. Though easy to walk on barefoot, it is nevertheless sturdy and dirt resistant, filling the order for a low maintenance vacation home. (left) Each of the upstairs bathrooms is enriched with river-stone pebbled floors from The Tile Gallery. A replica of the beach and shoreline, the pebbles bring the outside in.

GUEST BEDROOM

The guest bedroom is anchored by an antiqued iron lantern adorned with entwined iron twigs, a reflection of the lanterns enjoyed in the living space on the first floor.

Richar has employed the use of daybeds verses the obvious choice of twin beds. "This feels like a sitting room, not a bedroom," he observes. The fabric for the coverlets invites a dresser look to the room. "I also chose a carpeting for the entire upstairs that emulates a sisal look...something soft and easy to clean."

"In all the second floor baths, we've used pebbled floors - to bring the outside in," explains Richar. "The use of natural elements against the crisp, fresh, old fashioned rectangular white tile...it's not decorative tile...it's so simple," he adds.



Robert Bergelin furniture stars in the boys' suite - twin pencil post beds, separated by a masculine night table, and handsome benches upholstered in Schumacher's plaid. A Regency arm chair from Toms-Price adds a boyish flair with bedding from Bedside Manor providing linens from Cloud Nine Collection in a pin stripe and made like a man's shirt with a button cuff. They are at once handsome, yet casual enough to invite young boys to flop down on their bed and open the latest Harry Potter book. The desk chair sports a York Furrier pillow and mink Teddy bear.

BOYS' SUITE

The Waverly deer print, "Mountain View," takes center stage, enlivening the room with a sophisticated, yet boyish look, Richar points out. "I'm not a fan of cute. I want a sophisticated look to a child's room."

The stylish suite maintains a subdued palette of taupe and cream, yet sports a look that gives any boy a welcome haven to bring his friends.

"I've chosen a simple, warm, neutral background for the hall walls, to create a stage for all these exquisite fabrics to play off of. And generally speaking, the majority of artwork is outside our windows...our natural art collection is nature. So we have been very careful to compliment this unique surrounding and not compete with it."

GIRLS' SUITE

Enter the girls' suite and be ensconced in one of Richar's best surprises - a chartreuse toile. "Toile is a classic textile," he teaches, but this chartreuse makes it special and takes it out of the conventional. We've mixed in a daring leopard print...but added a crystal chandelier to insure the overall effect is chic," he says with a smile.

"I've used a bamboo pattern of silk for the bench at the foot of the bed...a little extravagance for a special girl."

All white Country Swedish furniture stands out against the toile, with a collection of American Girl dolls a magnetic draw for any little girl.

The rounded freeform walls in this suite give a soft, feminine shape to the room. Its adjoining bathroom walls are painted in a coordinating chartreuse with just a hint more yellow in it than the bedroom's toile paper.



American Girl's Kit stands next to a form displaying her birthday dress of a white organdy pinafore over a pink and white pinstripe dress. The green Lucite desk clock, jewelry, and accessories are from Forget-Me-Not Creations.



What little girl wouldn't be thrilled in this chartreuse toile bedroom fit for a princess? Bedding by Bed-side Manor highlights Schumacher's "Toile Orientale" upholstered headboard with square European shams in mango linen with a chartreuse embroidered bourdon stitching. A luxurious duvet in chartreuse toile reverses to the Summer Hill leopard print of the slipper chair. A textured throw pillow in tufted Mandarin silk sets off the simple lines of the bed. A silk matelassé, tightly upholstered bench is a sumptuous addition at the foot of the bed, where a fluffy white fur rug is a sophisticated accent from York Furriers. Country Swedish white furniture abounds...its clean, pure lines providing just the right contrast with the movement in the toile. A charming white Jena chandelier from Murray's Iron Works sheds soft light over the scene. Forget-Me-Not Creations adds perfect feminine touches to the room with their French café treasure box, and a sparkling selection of colorful jewelry. Ferns overflow from Les Tissus Colbert's white wrought iron planter. A soft floral fragrance emanates from Irene Heirose's pillowed green stripe sachets in the bathroom, found at The Perfect Setting.







MASTER BEDROOM

At the end of the hall is an elegant arched doorway with an anteroom crafted with soft, curving walls leading into the master bedroom.

A small closet holds a refrigerator ready to use for orange juice in the morning or a sip of wine before dinner. A built-in wine and wine goblet rack is attached to the handy shelving above, totally outfitted by The Perfect Setting.

The faux bois wallcovering is unusual for Richar. "I'm not big on wallcoverings," he admits. "But because of the tall vertical aspect of this room, it requires more interest

and we came up with this geometric paper as a decorative solution.

"The 'American Songbird' fabric by Schumacher engages our chartreuse and moss greens and introduces a teal for the draperies. We've complemented this with beautifully luxurious bedding from Bedside Manor," he announces, "dressing up the breathtaking poster bed. I love the country table, almost eight feet long, instead of a bed stand on one side of the bed," he says, another Richar surprise, a signature of our premier designer's vision.

CH&G 2003
DESIGN HOUSE
Adventures in Refined Living



MASTER BEDROOM

French doors open to a walkout balcony designed with custom iron railings by Neiweem Industries overlooking the patio beyond which the meandering lawn, spotted with huge oaks and maples, furnishes a pathway to the lake. The towering canopy of trees showers a beautifully filtered light through the room.

Murray's Iron Works' Sistine king bed is elegantly topped with a glorious canopy deck and headboard panels in moss green Australian linen from Bedside Manor, who further dresses the bed in a duvet cover and shams of Verde percale with Caesar vine embroidery. Three European shams, bi-colored in cream and white are trimmed with green velvet with green velvet ribbon, joined by two overstuffed decorative silk pillows in a shantung stripe - the bolster pillow is in a multi-green stripe. Pamper yourself with the classic elegance of Bedside Manor's lush Italian wool throw over the back of one of the Schumacher chairs, a wonderful accompaniment for cozying up with a book. Caledonian Antiques furnishes a long refectory table next to the bed that functions as a roomy night table as well as the perfect place to hold the resplendent hand-painted porcelain from Peachtree Place.



(left) Closets & Storage Concepts integrates a custom, fully-equipped closet room. Their distinctive work is evidenced in each of the upstairs bedroom closets. York Furriers adds a natural beige chinchilla stole outlined in mahogany mink to hang in the closet next to their striking hot pink fur accessories.

(see right and far right) The Lutron lighting in the bath, as well as the entire home, available at Fox Lighting Galleries, is a customized touch sensitive advanced lighting system that adapts to bright lighting or dimmed, delicate lighting. A New Metal Crafts' chandelier and mirror sconces bring added lighting ambiance. The wonderful skylight invites natural lighting into the room, allowing a plant full sunlight. For good humidity, why not locate it on Peachtree Place's Chinese ceramic drum stool in the shower? Be indulged with luxurious fluffy towels from Mimi's Fine Linens.

MASTER BATH

"I brought a natural stone into the master bath to simulate the flagstone downstairs," directs Richar. "It might be easier to care for and is more practical."

"Walls are simple with a crisp understated elegance for background...a celery wallcovering in striae." Richar describes the millwork for the vanities as "painted white with a thick cypress

countertop and splash...beautifully natural for the vessel sink to sit in and show off," he adds.

A skylight above brings dapple natural light into the room, accented by a huge lantern, which once again reflects the downstairs' lighting. The freestanding tub surrounded by the natural flagstone flooring continues the rustic European charm.



Borrowing from the French countryside, Orren Pickell's exquisite chateau design couples perfectly with the interior design work of Richar, who provides a study in inviting nature in to address the design of the home. Together, the mix imitates a century ago of relaxed country living, enlivened with visiting friends and family, and stimulated by gracious entertaining.

Remaining faithful to the past and the present, the Chicago Home & Garden Design House is forever linked to the charm of a French chateau retreat, recalling the countryside and its old world charm.

It is, in Richar's words, a home both warm and inviting...chaleureux, indeed. **CHG**



Through the "American Songbirds" draping is a balcony that overlooks the home's patio, the sprawling yard, and the glistening lake. Reflecting French countryside homes, the balcony spindles from Neiweem Industries look every bit as antique as those rendered from European chateaux. Custom hardware on the French doors from Contract Builders Hardware brings a further European touch.