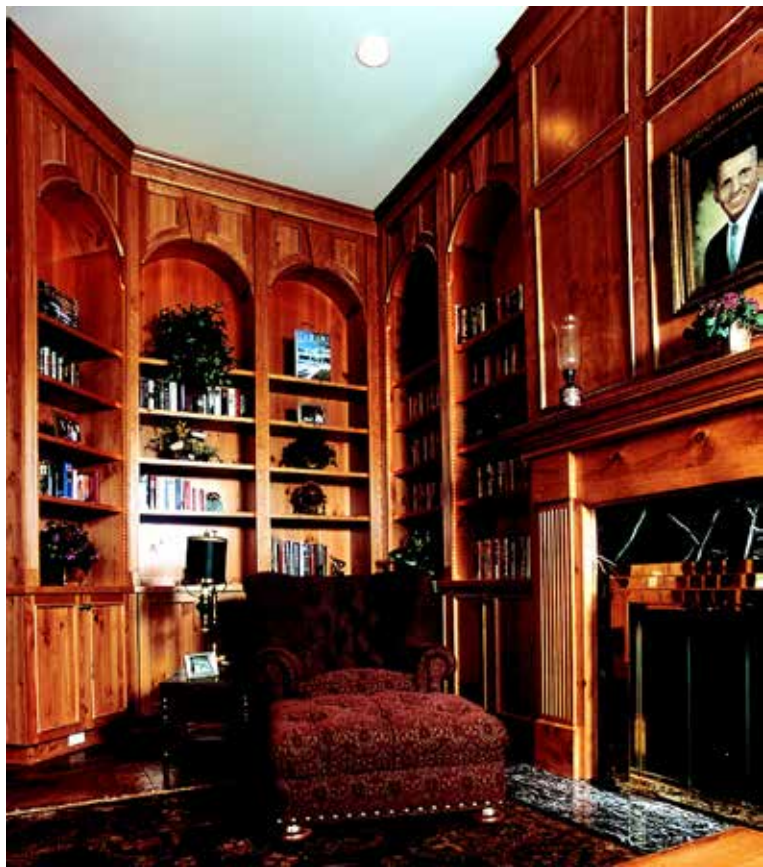


Concepts



▲ When the homeowner added music to the floor-to-ceiling custom cabinetry and the exquisite fireplace, he truly created the library of his dreams.



▲ This is why they call them, "Great Rooms." Enough said. Interior design by Janet McCann.

inside.

► **Renaissancedot.Com**
Opens October 27

► **Great Investment**
Put Your Money
in Your House

► **Interior Design Tips**
From the Experts

Getting personal

Designing to the homeowners' passions, pursuits and pastimes

When people set out to build a custom residence, their dream is to create a place that is especially unique—from the architectural design to the interior decorating and everything in between. What we've found at Orren Pickell Designers & Builders is that the home doesn't truly come to life until we begin to incorporate the client's vision, lifestyle and interests.

A residence we recently completed in Lake Forest is a perfect example of this. Set on a beautiful wooded lot, which was important to the homeowners for privacy, every room of the brick and graystone French Manor is incredibly individual and personalized.

"We knew exactly what we wanted when we sat down with the Pickell staff," say the homeowners, who were building their retirement dream. "We had in mind a home with rooms that we'd live in every day of the week. It also had to be a very open space with no small doors or entranceways. We wanted to do things a little differently. All along the way, we never heard a Pickell person say 'no, we can't do that.' They were always ready to go that extra mile."

The first step in the process was to design a home that suited this clients' new retirement lifestyle. To get the "ranch feel" they

See **GETTING PERSONAL** page 2



2201 Waukegan Road, Suite W-285
Bannockburn, IL 60015

Telephone: 847-914-9629
www.pickellbuilders.com

For recorded information on our latest home designs, call 1-888-Pickell

PRSR STD
US Postage
PAID
Permit No. 245
Deerfield, IL 60015



Personal

▲ Wine, anyone?

Getting Personal (from page 1)

were after, Pickell architects made the very most of the main floor. The second story with two bedrooms and a bath was designed only to accommodate guests. The architectural team created an open floor plan with high ceilings and windows. Large archways and wide hallways added to the feeling of spaciousness. An extraordinary Great Room eliminated the need for a living room, which the homeowners said was rarely used in their previous residence. The spectacular master bedroom suite, an irregularly-shaped room with a beautiful Waterford crystal chandelier, as well as their daughter's bedroom, was also located on the main floor.

Architects took special care to design this home so it was a direct reflection of the clients' many passions. Mediterranean influences would be evident throughout the house. Imported Italian tile was laid piece-by-piece alongside limestone in the stunning entryways. A focal point in the kitchen was beautiful mosaic tile that artfully depicted a basket of bread. This theme was carried through with a wine bottle tile motif in the adjoining keeping room. Adding further to the atmosphere were the glass fronts on the nut-brown oak cabinets that would easily display the homeowners' fabulous Italian pottery collection. Glass pasta bins on dove-gray island cabinets added still more color and convenience. An outdoor bocce ball court even made its way into the design.

And while the lady of the house was able to pursue her interest in gourmet cooking, her music-buff husband could retreat for some reading to an incredible library with gorgeous

floor-to-ceiling custom cabinetry and a stunning fireplace. Or he could go to the English basement, which had been turned into an elaborate leisure room complete with the finest handcrafted cabinetry, slate tile floor and stone fireplace. A state-of-the-art audio and video system had been designed to provide music throughout the house and allow for multiple TV programs, videos or DVDs to be viewed simultaneously. A jukebox, shuffleboard table, vintage turntable and record collection added to the fun. A stone wall led to the smoking room with a custom-built humidior, the first-ever built by Pickell. And if that wasn't enough, an expansive wine cellar was built to accommodate up to 3,500 bottles of wine. A home office was also located in the remarkable lower level.

It would be unfair to describe this home without taking special note of the incredible use of millwork. From walnut in the Great Room to cherry in the Master Bedroom, exquisite woods were used in every area. Handsome built-ins were specifically created to display the family's crystal collection. The grand beams on the high ceilings of the keeping and Great Rooms were actually designed by one of the homeowners. In fact, the couple contributed designs for many of the home's most beautiful details, including a stunning wood-framed mirror in the powder room, the redwood wine cellar, and the distressed-pine bar in the leisure room. This house was truly born from the creativity and imagination of the homeowners and orchestrated by the architects (in our Design Group)—exactly the way it should be for a true dream home.



▲ Handcrafted cabinetry helps turn this lower level into a grand retreat.



▲ Glorious natural light envelops this warm, delightful sun porch.

Opening October 27

The Renaissancedot.com House

Introducing The Renaissancedot.com House, Orren Pickell Designers & Builders' eighth concept house, which honors the technological and artistic achievements of the new millennium. Located in East Glencoe, the home will open to the public on Saturday, October 27 and just may be the most exciting residence ever created by our company. From the architecture (created by our Design Group) to its technological innovations, this house stretches every boundary and sets new standards in the custom home building industry.

Architecturally, the residence is a blending of Italian Renaissance and Beaux Arts. Thoroughly a home for the modern-day family, it fully respects the tradition of fine, classical European architecture. In brick with limestone keys, quoins and a slate roof, the structure is nothing short of stunning. Outdoor terraces, second story bay windows, semi-circular patio areas and a handsome leaded glass front door provide further architectural detail. Divided light windows with limestone surrounds allow the house to radiate in glorious natural light and afford the homeowner grand views of the heavily forested ravine property.

Inside, the home continues to overflow with architectural and design details. Entering from the front door, visitors have a direct view through a wall of windows to the ravine. In fact, the entire house is a play on light, texture, shape and color with its unique combination of exotic woods, stones and tiles. From the sweeping main staircase to the majestic Great Room to the formal oval dining room and circular foyer, this home entertains the eye at every turn. There's also a fantastic kitchen by CabinetWerks, a fabulous master bedroom suite, three additional spacious bedrooms and baths, a finished lower level with

a fifth bedroom/guest suite, eating/entertainment area, exercise room, wine storage and massive family room.

Yet, the home itself could not be called The Renaissancedot.com House if it did not incorporate the most up-to-the-minute, cutting-edge technology currently available in the marketplace. From super-efficient radiant heating to a plasma-screen TV that can serve as a revolving gallery of virtual paintings to the Internet-controlled HVAC, the high-tech innovations make this home a "must see." On vacation in Europe and need to turn on the alarm at home? The lighting and security systems can literally be controlled from any Internet connection in the world. At the same time, the warm woods and playful details, such as a surprise reading nook in the second-floor hallway, add charm and beauty amid a futuristic environment.

The Renaissancedot.Com House will be open 1-4 pm most weekends from November through January, or can be viewed by special appointment. Please call the Orren Pickell Designers & Builders offices for specific dates, holiday hours and additional information. Its purchase price is \$3,489,000.



Under construction: The Renaissancedot.com House, 156 Maple Hill, Glencoe.

Cover story kitchen: Warm brown tones in the designer kitchen by CabinetWerks tie into the woods used throughout the home. Note how the cream colors of the island, hood, and Shivakashi granite countertops, are in striking contrast to the flooring and the Wood-Mode fine custom cabinetry.



Our Staff

PRESIDENT
Orren Pickell

SPECIAL PROJECTS COORDINATOR
Tina Pickell

LEGAL & HUMAN RESOURCES
Barry Smith, HR Manager
Susan Sullivan, Legal/Contracts

FINANCE DEPARTMENT
George Skweres, Chief Financial Officer
Terri Rizzo, Accounting Manager
Casey Reyes, Senior Project Analyst
Kevin Southwick,
Network Administrator
Chris McAvoy, Programmer
Ron Rochester, Financial Analyst
Bob Kinley, Job Cost Accountant
Stephanie Helton-Rylatt,
Accounts Payable
Sonya Bablick, Accountant and Payroll
Svea Tracy, Assistant

SALES & MARKETING DIVISION
Wendy Cohen, Vice President
Debra Gohr, Sales and Marketing
Office Manager
Ed Sucherman, Marketing Manager
Laura Harris, Lot Acquisition and
Training Associate
Carol Lee Wax, Sales Associate
Heidi Mergenthaler, Sales Associate
Susan Cemar, Sales Associate

PROJECT ESTIMATORS
Craig Wolski, Chief Estimator
Chris Rasmussen, Estimator
Janelle Giordano, Estimator

DESIGN GROUP
Anthony Perry, Vice President
Mark Benner, Principal
Kent DeReus, Principal
John Anstadt, Principal
Arif McAlpine, Associate Principal
Brian Ries, Associate Principal
Len Eckhoff, Associate Principal
Jason DeBaker, Project Designer
Anthony R. Miller, Project Designer
Beth Lindahl, Project Designer
Jeff Eichhorn, Project Designer
Manuel Hernandez, Project Designer
Jean Gonzales, Project Designer
Katie Sharp, Project Designer
Mike Mobile, Animator

CABINETWERKS
Dave Heigl, CKD, Division Manager,
Senior Designer
Jennifer Accomando, Office/Showroom
Manager, Senior Designer
Jan Chinske, Senior Designer
Julie Munch, Administrative Assistant
Andrea Schimka, Sales/Designer
Penny Steffen, Sales/Designer
June Happ, Sales/Designer
Theresa Sterbis, Sales/Designer
Jodi Staples, Draftsperson
Jason Ward, Draftsperson
Jennifer Vineis, Draftsperson
Brad Motl, Draftsperson
Beckie Moeller, Draftsperson
Larry Schaar, Lead Installer
Wayne Janowski, Installer

CONSTRUCTION DIVISION
Dennis Ward, Vice President

SUPERINTENDENTS
Kevin Batz, Senior Superintendent
Vince Janowski
Scott Campbell
Randy Richter

PROJECT COORDINATORS
Michael Tracz, Senior Project Coordinator
Henry Krupa
Kevin O'Sullivan
Jennifer White,
Assistant Project Coordinator
Jennifer Galler, Construction Assistant

CARPENTRY DIVISION
Kurt Savageau,
Trim Carpentry Superintendent
Jim Wood,
Rough Carpentry Superintendent

HOME MAINTENANCE SERVICE DEPARTMENT
Warren Schwartz
Teresa Martin
Mitch Roper
Carl Kraemer

RECEPTIONIST
Shannon Lassiter

REMODELING GROUP
Greg Schaar, Division Manager
Melissa Hale,
Remodeling Administrative Assistant
Stacia Appenzeller,
Senior Process Manager
Kathy Miller, Process Manager
Erik Moeller, Assistant Process Manager
Tom Koutny, Sales Associate
Jeff Suo, Senior Project Superintendent
Greg Hejna, Project Superintendent
Don Malin, Project Superintendent

Concepts is published quarterly by Orren Pickell Designers & Builders, 2201 Waukegan Road, Ste. W-285, Bannockburn, IL 60015.

© 2001. All rights reserved.

Designer: Allegro Design Inc.
Agency: Winger & Associates, Ltd.
Photographer: Linda Oyama Bryan

A great investment Putting your money into your home is a wise choice during tough times

by Orren T. Pickell

Here's some good news during a time when people are discussing stock market ups and downs—home sales are up nationwide and the value of high-end residential real estate continues to rise. Your home remains a stable, safe, rapidly appreciating investment, both long and short term.



What can this be attributed to? Land today is a precious commodity. Metropolitan areas continue to expand at a rapid rate. When you buy in a location that is desirable, your house automatically has a higher sale price since it's becoming tougher and tougher to find sites to build homes on.

Additionally, in the case of high-end homes, I credit this trend to value. Disclosure laws are the big issue today, and that's where quality and reputation come into play. When a home becomes a certain age, it becomes a liability. However, a new home built with the finest materials and construction techniques is easily maintainable and retains its worth for many years to come. Resale never seems to be an issue with a well-built home.

Experts offer interior design tips

Interior design is always one of the most enjoyable, creative parts of building or remodeling a home. It can also be one of the most taxing. With so many fabrics, furnishings, cabinetry finishes, hinges, fixtures, brick colors, stones, tile colors, etc., available in the marketplace today, most of our clients seek the advice of professional interior design specialists to help them with the selections process. Their talents and expertise help bring the whole package together.

Following are a few tips from some of the designers that work closely with our company.

PLAY HIDE AND SEEK. Make your TV screen disappear. According to Tom Girot of Thomas Sarti Girot Interiors, Ltd. of Park Ridge, a TV screen no longer has to be an eyesore in an otherwise beautiful room. Over the past year, Tom has been finding a variety of wonderful ways to make the TV space visually appealing but still easily accessible. Putting a flat-screen TV above the fireplace works especially well. It is central for all viewers and with the push of a button can hide behind a sliding painting or photograph. Draperies are another alternative. Guests won't even give them a second glance . . . unless they want to compliment you on your fabulous choice of fabric!

GET MOODY WITH COLOR! Martha Teten of Susan Fredman & Associates Ltd. of Northbrook reminds us that color truly makes a difference whether you're trying to update a room or bring in a completely new look. The lighting in a room also plays with color throughout the day and night. If you visit the Renaissance.com House, you'll notice there are very few walls on the main level. Martha took advantage of this by using "Springfield" green for the elliptical dining room walls. Visible from various vantage points throughout the home, the color flows into every room complementing the open plan. This new millennium green, a pure soft green without tinges of gray or sage, subtly integrates the ravine backdrop into the home.

Frankly, in the resale market, there seems to be a whole following of people who look for our name. They know when they buy a Pickell home, every component has been considered. We incorporate architecture, interior design, landscaping, and maintenance—every step necessary to take a home from start to finish—into our list of services. They don't have to wonder if the house was properly maintained or if landscaping is as beautiful as the home itself. Providing the complete package has proven to be an invaluable service to our clients.

I'm not saying that housing sales haven't gone down in certain parts of the country. However, the Chicago market is as solid as a rock thanks to the diversity of our local economy. People here are investing in their nests.

With rates as low as they are, building a home is an even better investment today—it is certainly as safe a bet as a completely insured mutual fund. What's more, you and your family will live in it and enjoy it every day. It should be the most exciting and fun investment you will ever make.



Tom Girot worked with Orren, Kurt Savageau, CabinetWerks, and Preferred Millwork to create this exquisite fireplace surround at the Transition House. The cabinet on the left houses a large-screen TV and entertainment center.

EXPLORE THE POSSIBILITY OF TILE. Steve Gregorio of Glen Ellyn notes that tile in any form, from mosaic to limestone, is becoming increasingly popular, as it provides homeowners with so many options. In the past, backsplashes used to be just a strip of granite or continuation of the countertop. Now, designers see this area as a place to create interest. They are using tile in a variety of patterns, colors and designs to make the backsplash a focal line in the kitchen. Tile also provides an extremely durable surface, won't date like wallpaper, and is relatively easy to change.

BRING THE OUTDOORS IN. Living in a high-speed, high-tech world has people seeking ways to bring balance to their lives, and one way they are doing this is through nature. Marsha Jones of Marsha Jones Interior Design in Wheaton says she is incorporating more natural materials—bamboo, rattan and a variety of woods—into her designs. Colors lean toward an earth-toned palette as well—moss greens, mustards, browns, and rusts. All the large glass windows and sunrooms seen in the homes of today also reflect this trend, as they provide views of trees, flowering gardens and back yard ponds. Homeowners want a haven that is light, bright and helps them feel connected to the great outdoors.